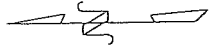
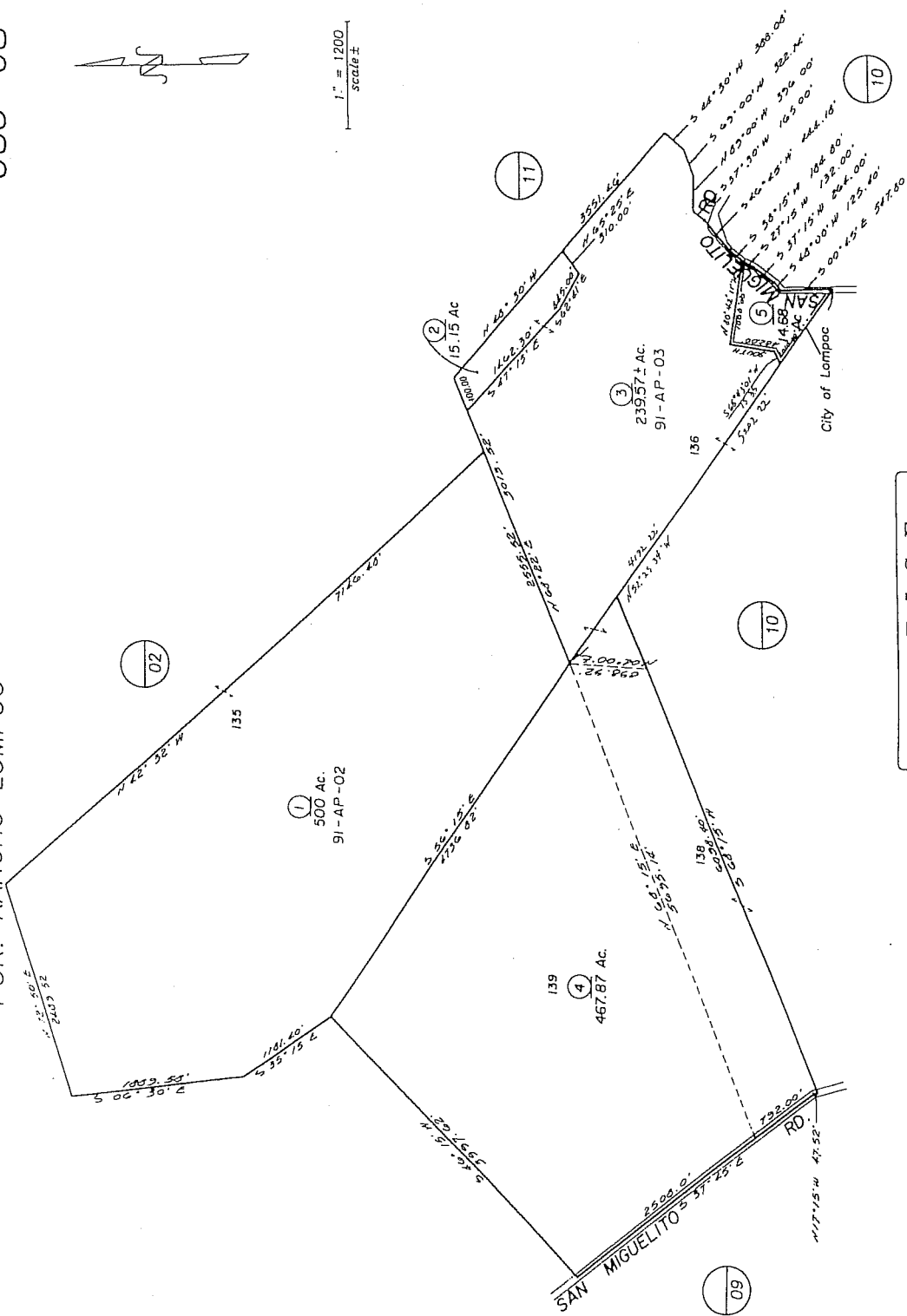


POR. RANCHO LOMPOC

083-08



1" = 1200
scale ±



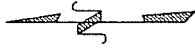
NOTICE
Assessor's Parcels are for tax assessment purposes only and do not indicate either parcel legality or a valid building site.

City & Vicinity of Lompoc
Assessor's Map Bk, 083-Pg, 08
County of Santa Barbara, Calif.

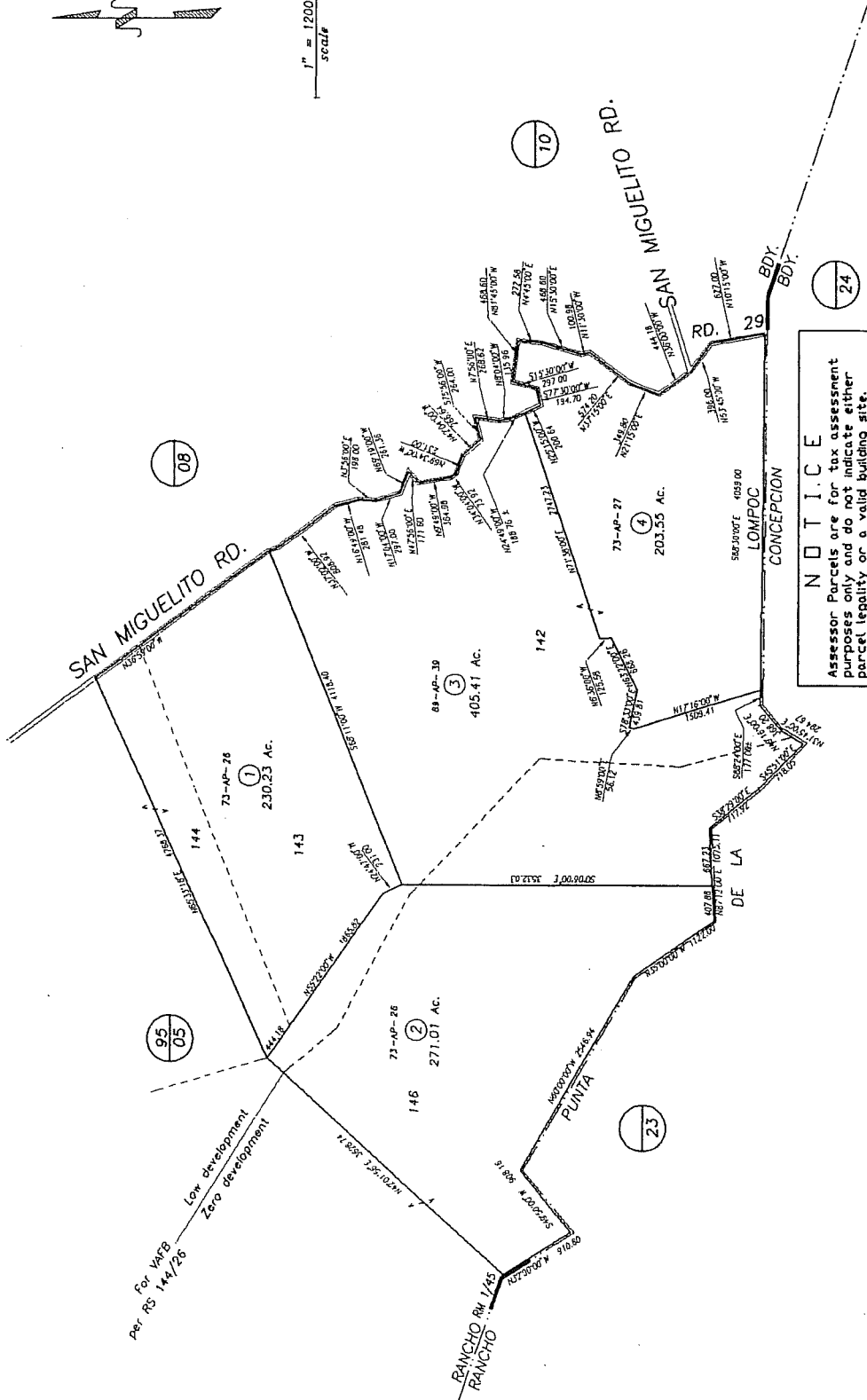
05/00 05 Added City Limit Line AS A ISLAND

RANCHO LOMPOC

083-09



1" = 1200' scale



NOTICE
 Assessor Parcels are for tax assessment purposes only and do not indicate either parcel legality or a valid building site.

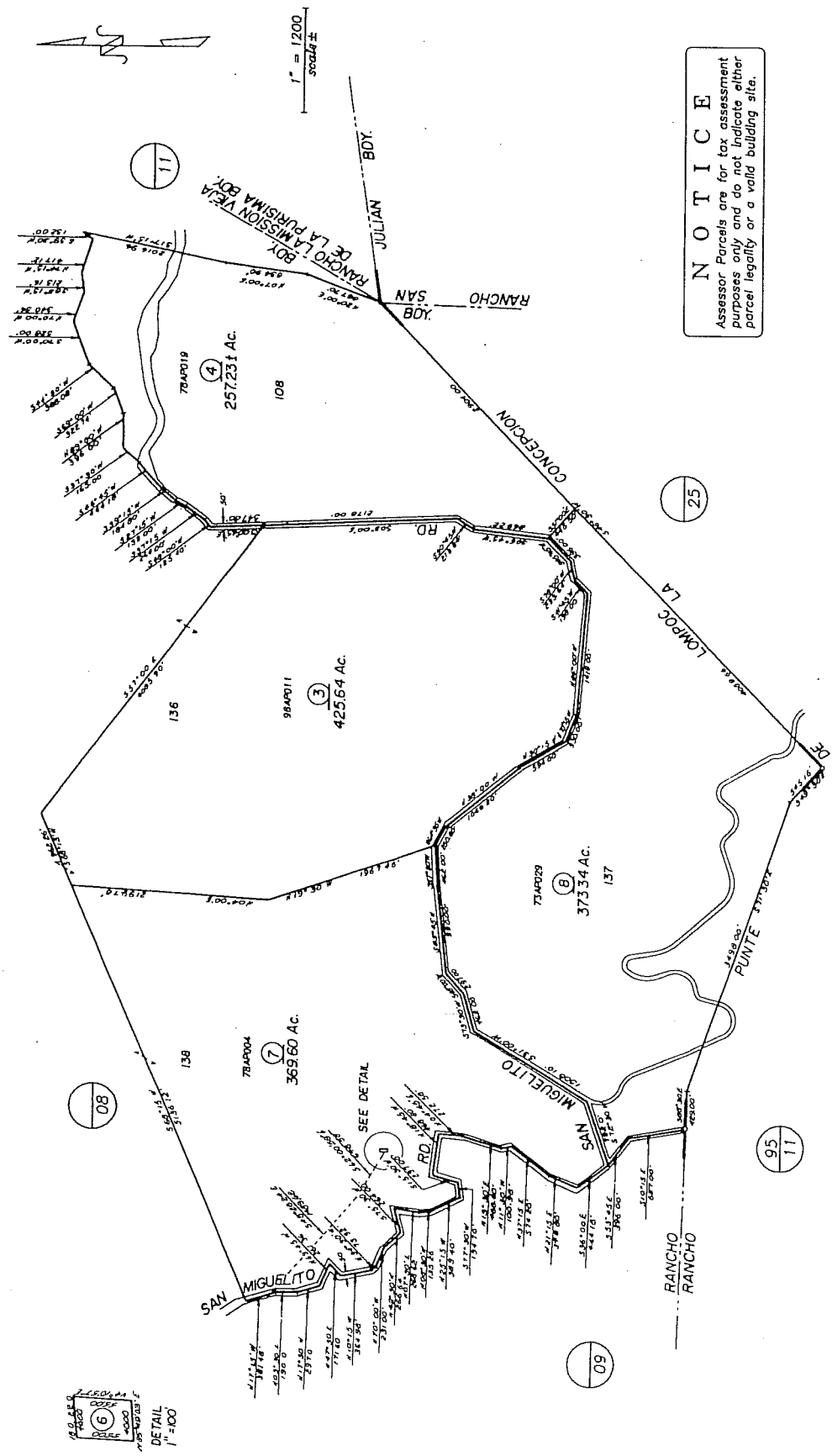
Assessor's Map Bk, 083-Pg, 09
 County of Santa Barbara, Calif.

05/93 Add rec'd for development fee

09/06/1877 R.M. Bk.01, Pg.45, Tract Subdivisions of Lompoc & Mission Vieja

FOR RANCHO LOMPOC

083-10



NOTICE
 Assessor's Parcels are for tax assessment purposes only and do not indicate either parcel legality or a valid building site.

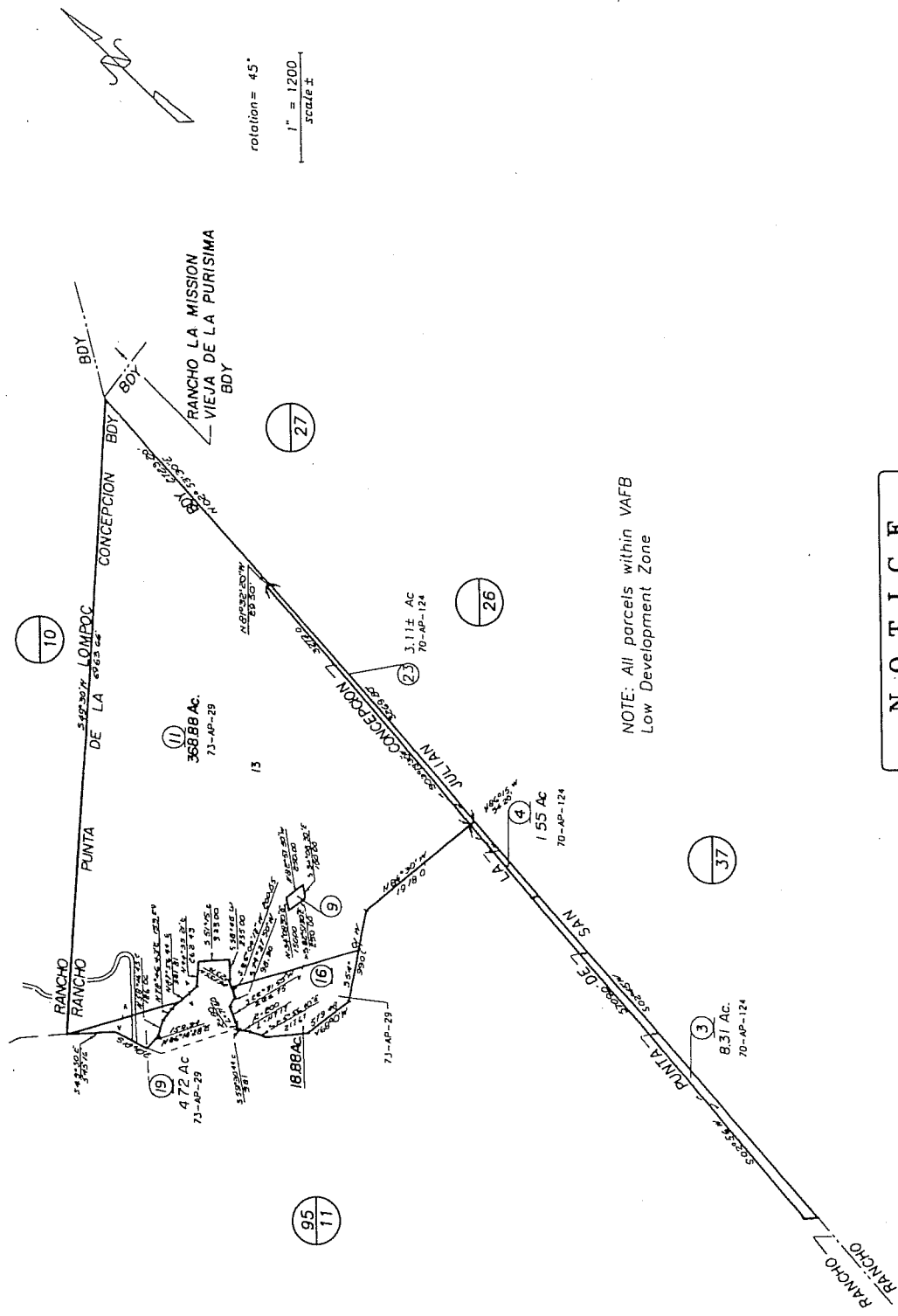
City of Lompoc
 Assessor's Map Bk, 083-Pg, 10
 County of Santa Barbara, Calif.

R.M. Bk. 1, Pg. 45, Tract Lompoc & Mission Vieja

02/97 03 New Ass. Preserve #

REG. 6
 DETAIL
 1" = 400'

POR. RANCHO PUNTA DE LA CONCEPCION



NOTE: All parcels within VAFB Low Development Zone

NOTICE
 Assessor Parcels are for tax assessment purposes only and do not indicate either parcel legality or a valid building site.

Assessor's Map Bk, 083-Pg, 25
County of Santa Barbara, Calif.

LD/03 21 & 22 MWD 23

